

EXPERIENCE Eco-Explorers!



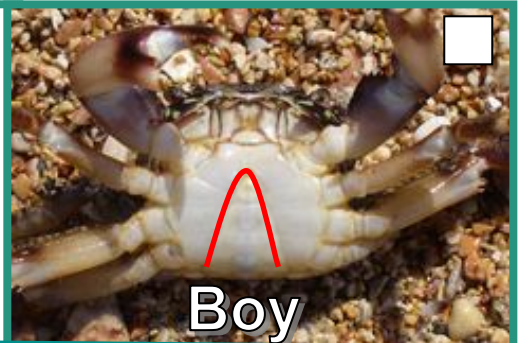
YOUR NATIONAL PARK Student Name: _____

Apaca is a historical site protected by the War in the Pacific National Historical Park. There is so much to see! Fill in the worksheet as you take a walk along the shore of Apaca.

1. Look for different kinds of crabs on the shore. Be careful when catching them. Do not harm them. Check the box of the crab that you find.



GHOST CRABS: These pale crabs are called Ghost Crabs because they blend in with the sand. They move so fast that they can catch insects in midair. Gently flip the crab and look at its underside. Check the box if your crab is a boy or girl.



HERMIT CRABS: A small hermit crab is called *duk-duk* in Chamorro. They make their homes out of objects they find on the beach, like shells, jars, hollowed rocks or bottle caps. Race your *duk-duk* against a friend's *duk-duk*.



2. What are some other **living things** that you see? List them below:

A. _____

B. _____

3. What are some **non-living things** that you see? List them below:

A. _____

B. _____

4. Are there things on the beach that do not belong? **NO** **YES**

5. How do you think the trash on the beach can harm the creatures living here?

6. What are some ways that you can help to protect your park and the creatures that live in it?

This publication was provided by:



PACIFIC HISTORIC PARKS

Remember • Honor • Understand

EXPERIENCE Eco-Explorers! Answer Key

YOUR NATIONAL PARK

1. Look for different kinds of crabs on the shore. Be careful when catching them. Do not harm them. Check the box of the crab that you find.



GHOST CRABS: These pale crabs are called Ghost Crabs because they blend in with the sand. They move so fast that they can catch insects in midair. Gently flip the crab and look at its underside. Check the box if your crab is a boy or girl.



HERMIT CRABS: A small hermit crab is called *duk-duk* in Chamorro. They make their homes out of objects they find on the beach, like shells, jars, hollowed rocks or bottle caps. Race your *duk-duk* against a friend's *duk-duk*.



2. What are some other **living things** that you see? List them below:

Answers will vary. They may include the following.

A. Plants

B. Spider

3. What are some **non-living things** that you see? List them below:

A. Sand

B. Shell

4. Are there things on the beach that do not belong? NO YES

5. How do you think the trash on the beach can harm the creatures living here?

Answers will vary. They may include the following. They get sick or die from eating it. They could get tangled or trapped in it.

6. What are some ways that you can help to protect your park and the creatures that live in it?

Answers will vary. They may include the following. Pick up the trash. Don't litter.

